



**CMS** Electracom

**Innovative Power Solutions**



**PRODUCT RANGE BOOKLET**

# INTRODUCTION

With our modern offices throughout Australia, New Zealand, Malaysia, Singapore, United Kingdom and the United States of America. CMS Electracom has a wealth of expertise in modular wiring and power solutions for commercial buildings.

We supply a broad range of off-the-shelf and customised products to commercial furniture manufacturers, providing innovative power solutions, to help them succeed in a competitive sector, which still demands quality.



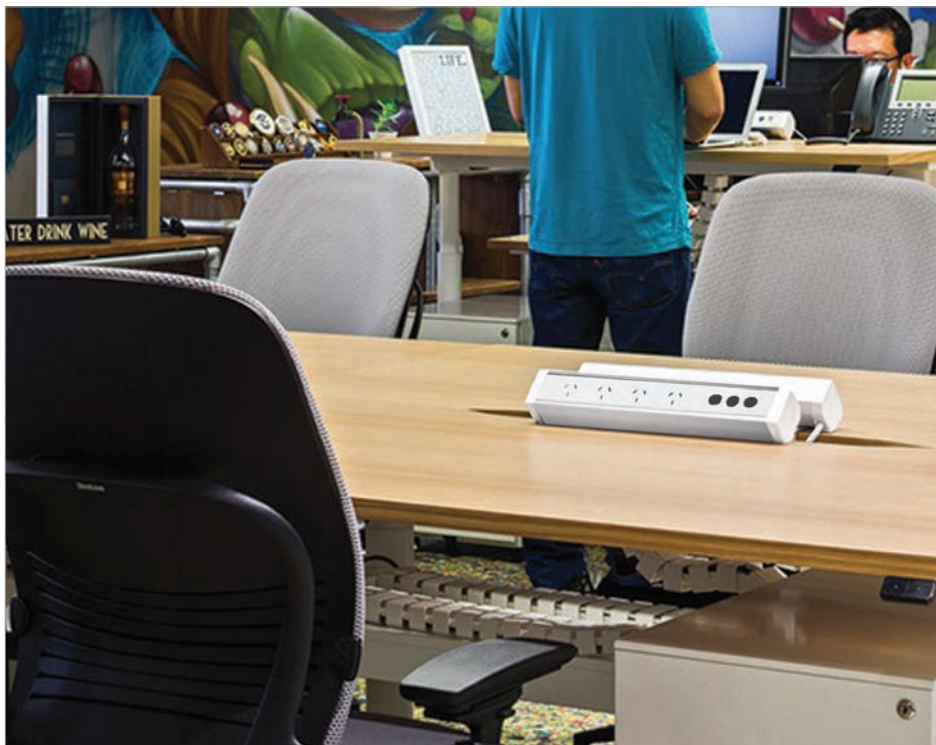
## Athena II Above Desk Power Rail



## Zeus II Above Desk Power Rail



## Premier Above Desk Power Rail





**Leto** Above Desk Power Rail with Integrated Cable Sling



**Equa & Iso** Above Desk Power Rail



## Odyssey Above Desk Collaborative Power Module





## SW18 Softwired Power Module

1. Dual switched GPO module.
2. FM4 thick wall panel bracket.



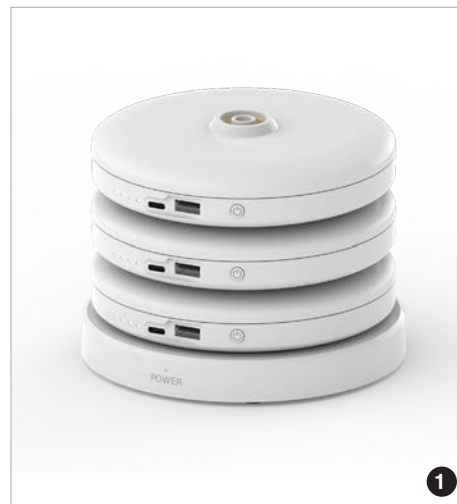
## Modular USB Charging Technology

1. 100W USB-C PD charger.
2. 60W USB-C PD charger.
3. Inline USB-A QC 30W charger.
4. Inline USB-C PD 30W charger.



## Freedom Portable Charging Module

1. FR003 Freedom Kit with 3 x Portable Chargers and Charging Base.
2. FR001 Freedom Portable Charger USB-C PD 60W, USB-A 18W
3. FR002 Freedom Wireless Charging Base 150W



# Quantum Series Wireless Charging Technology

- 1. Vibe through-desk wireless charger 10W
- 2. Helipad 15W integrated wireless charger.
- 3. Helistand 15W integrated wireless charger.
- 4. Echo Duo with 30W USB-C/A and 15W wireless charger
- 5. Quantum 15W Boost wireless charging module.



## Atom In-Desk USB Charging Module

1. Atom dual USB-A 30W fast charger.
2. Atom underdesk mounting bracket.





## Echo Series In-Desk Module Series

1. Duo Module
2. Trio Module
3. Single Module



## KonexUS In-Desk Power Module



## Blinky In-Desk Collaborative Charging Module



## Centra In-Desk Power Module



**Pop-Up** In-Desk Power Module





## Accede In-Desk Power Module



## Accede Dual Lid In-Desk Power Module



## Flip In-Desk Power Module

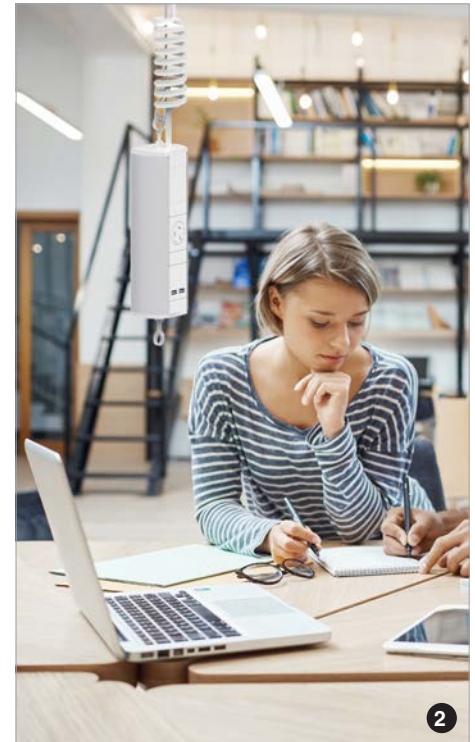


## Executive II In-Desk Conferencing Module

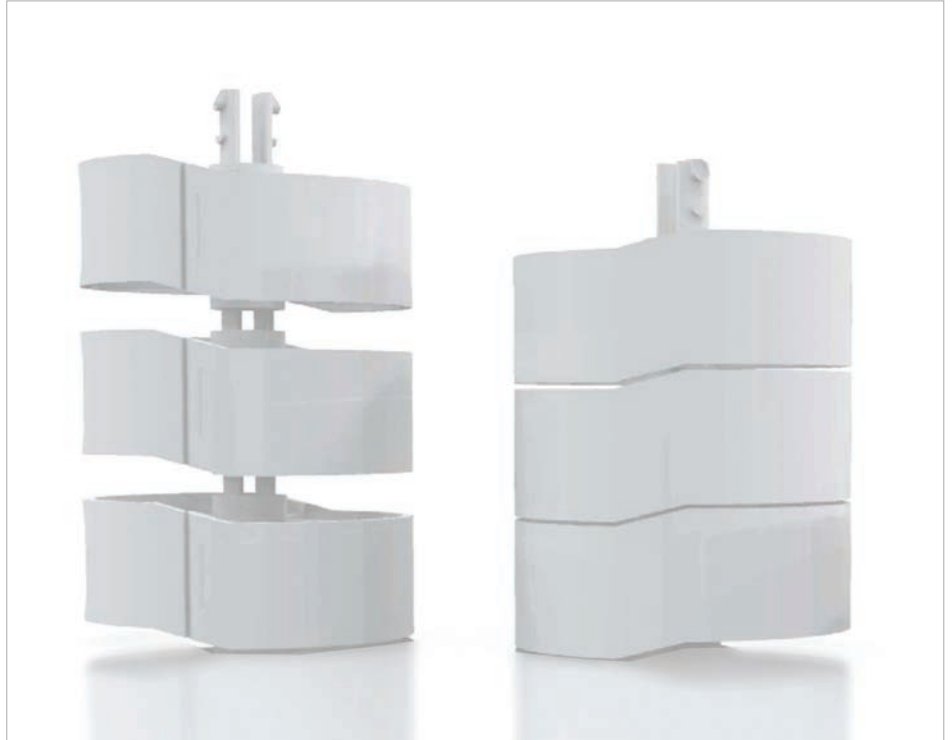
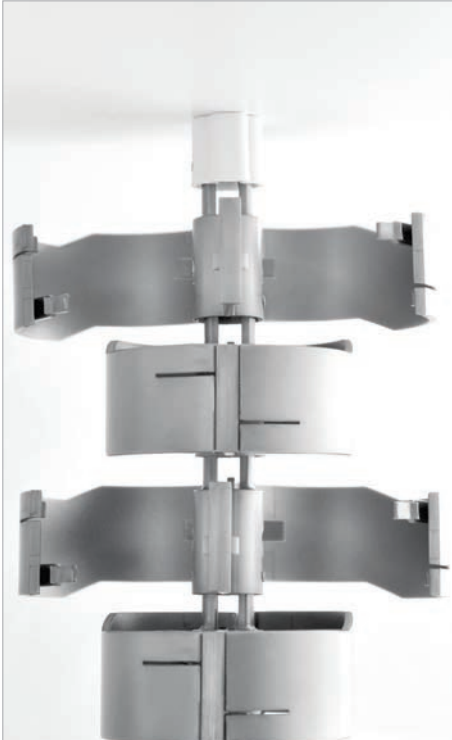


## Elevate Retractable Power Module

1. Elevate Electric Retractable Power & Charging Module – up to 10m
2. Elevate Manual Retractable Power & Charging Module

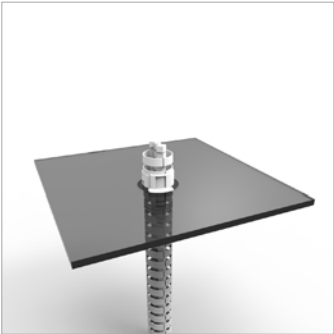








**Cirqlon** Rigid Umbilical - Floor to Ceiling Application



## Link Cable Management - for Height Adjustable Workstations

1. Link shown in height adjustable workstation.
2. Link 20.
3. Link 40.
4. Link 60.



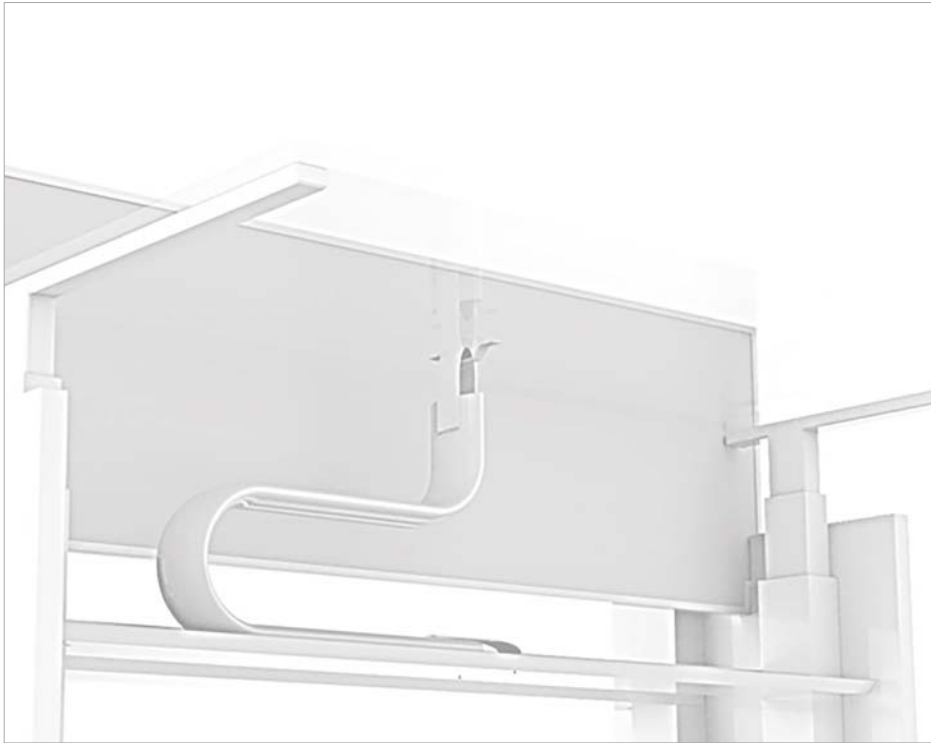
## Trax Cable Management - for Height Adjustable Workstations

1. Trax single compartment
2. Trax dual compartment.





## **Cable Shute Fabric** Cable Management - for Height Adjustable Workstations

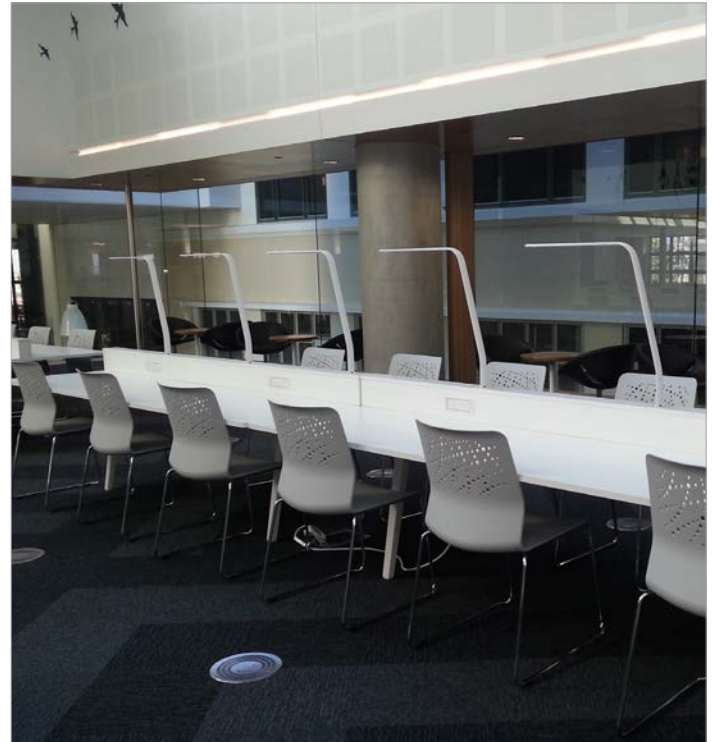


## Wire Grid Under Desk Cable Management

1. Dual-Tier configuration
2. Back-to-Back configuration
3. 100mm Wide configuration



## Libelle Task Lights



## Dynamo Monitor Arms

1. Dynamo dynamic monitor arm
2. Laptop tray to suit Dynamo series



## CPU Holders

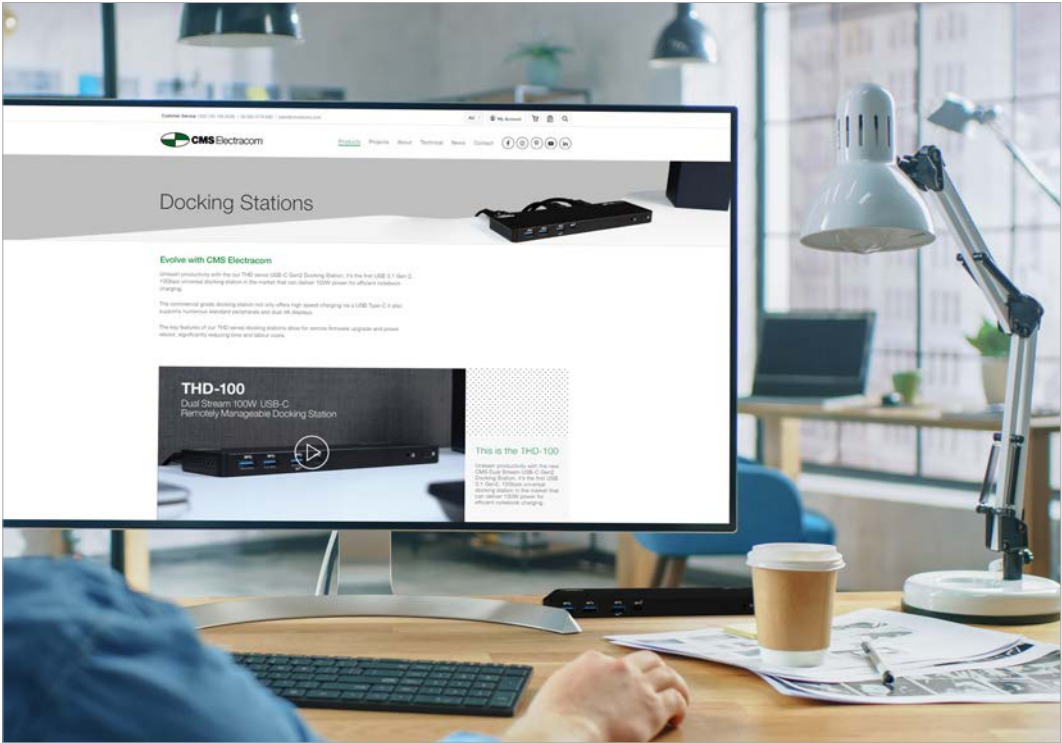
1. CPU30 Series
2. CPU60 Series





# THD-100 USB-C Softwired Docking Station

- 1. 100W USB-C Dual Stream Dock
- 2. Integrated softwired enclosure

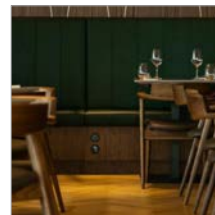
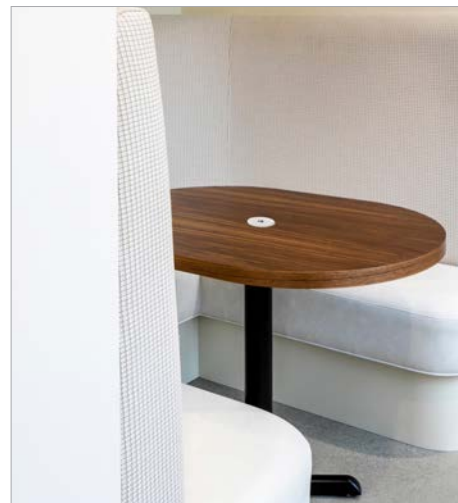


1



2

## Typical Applications



## SALES & TECHNICAL SUPPORT

**Sales** [sales@cmselectra.com](mailto:sales@cmselectra.com)

**Estimating** [estimating@cmselectra.com](mailto:estimating@cmselectra.com)

## REGIONAL OFFICES

Australia	1300 159 159
New Zealand	(09) 582 0776
Singapore	+65 9006 0767
Malaysia	+60 162 077 106
United Kingdom	+44 (0) 7531 162 631
United States	+1 214 238 8296

**Disclaimer:** CMS has made every attempt to ensure the accuracy and reliability of the information provided in this document are correct. All information contained in this document is to be used for general guidance only. CMS reserves the right to change, delete or modify the information without notice. **Updated May 2021.**

© CMS Electracom 2020



**[www.cmselectra.com](http://www.cmselectra.com)**

Connect with us

